



DEZAN SHIRA & ASSOCIATES

Your Partner for Growth in Asia

© SCMP

China's Corporate Social Credit System

What Businesses Need to Know

Webinar • Thursday, 12th March 2020 • Promoted through channels of the British Chamber of Commerce in China and Dezan Shira & Associates



Content

= Answers to these Questions:

- **What is Social Credit?**
- **What is the Social Credit System (SCS)?**
- **What is the Corporate Social Credit System (CSCS)?**
- **When will the Corporate SCS be operational?**
- **What are the challenges for companies operating in China?**
- **How does COVID-19 affect the system and its development?**
- **Is it too late to prepare?**

SOCIAL CREDIT was introduced to:



***“...allow the trustworthy to roam
everywhere under heaven while
making it hard for the discredited
to take a single step.”***

State Council – June 14, 2014

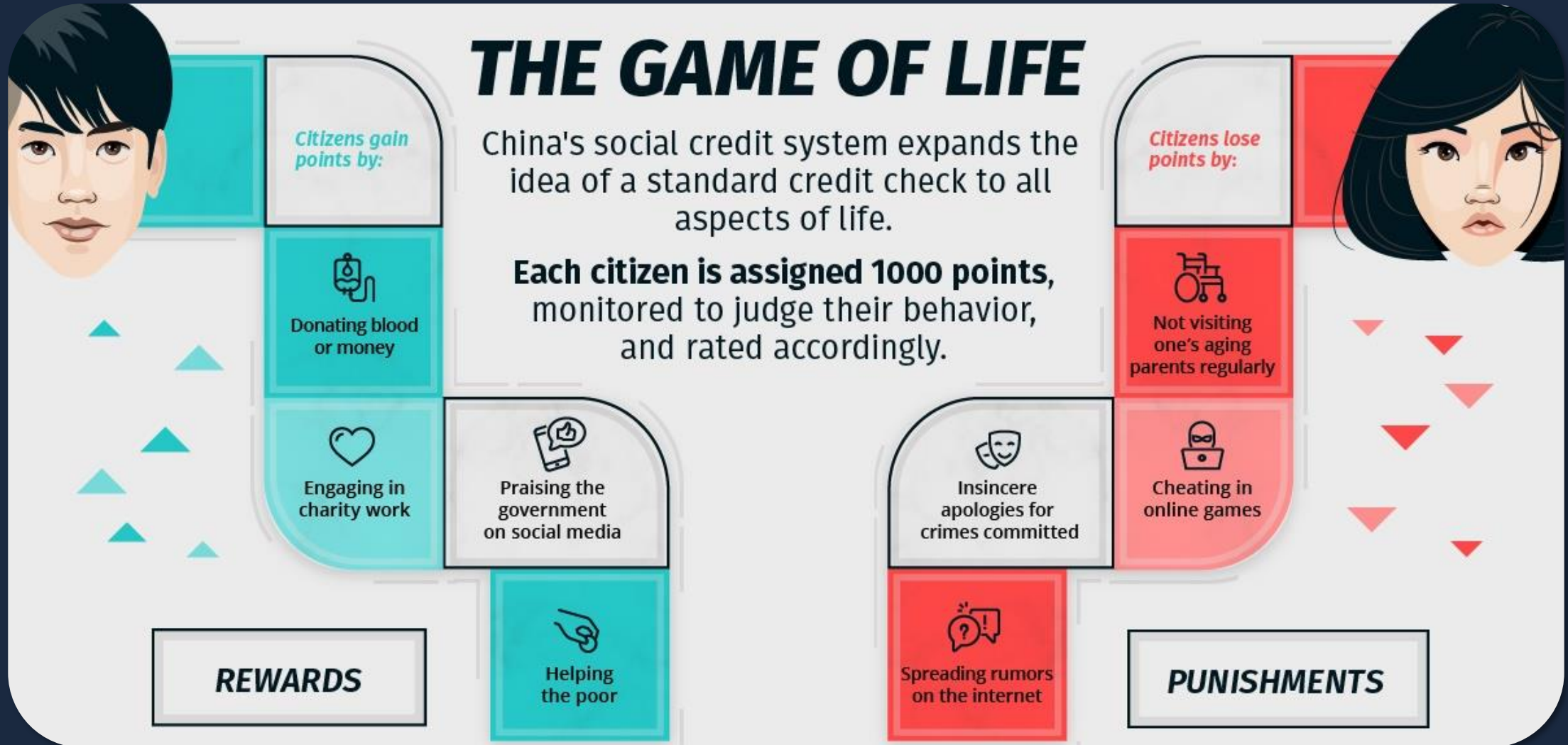
“ Social Credit System ”

社会信用体系

China's plan to
regulate business and citizen behavior
with incentive schemes



Individual Social Credit System



Source: VisualCapitalist (2019)

How Could your Personal Social Credit Score Look Like?

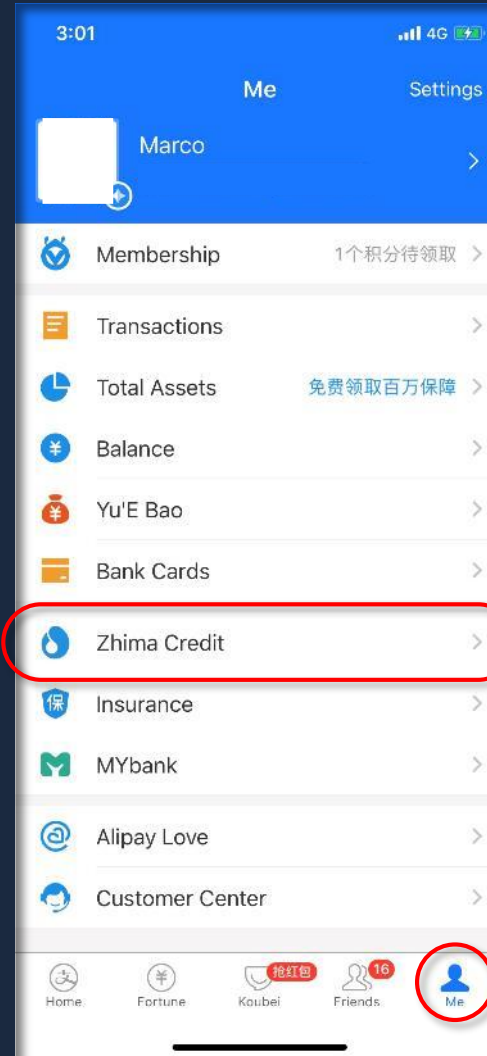
1. Open the Alipay 支付宝 App



2. Click on the “Me”-tab below

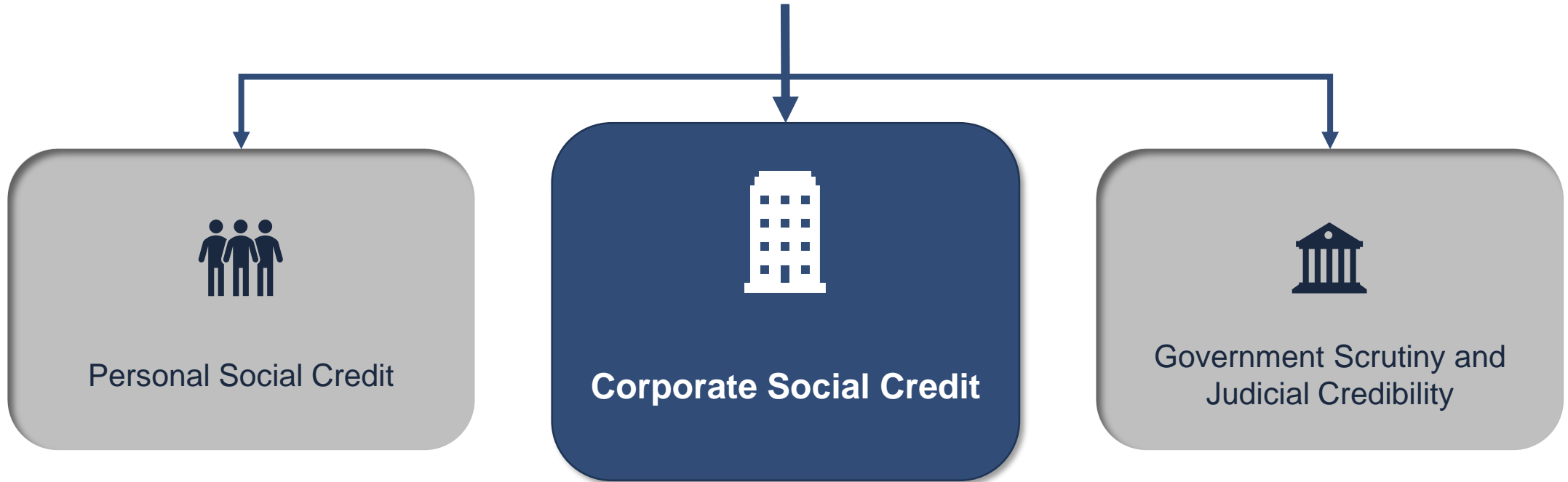
3. Click on Zhima 芝麻 (Sesame) Credit

4. See your score



SCS targets

...



China's Corporate Social Credit System (CSCS):
The Biggest Upcoming Change in Compliance in China

From
Direct market access restrictions for companies

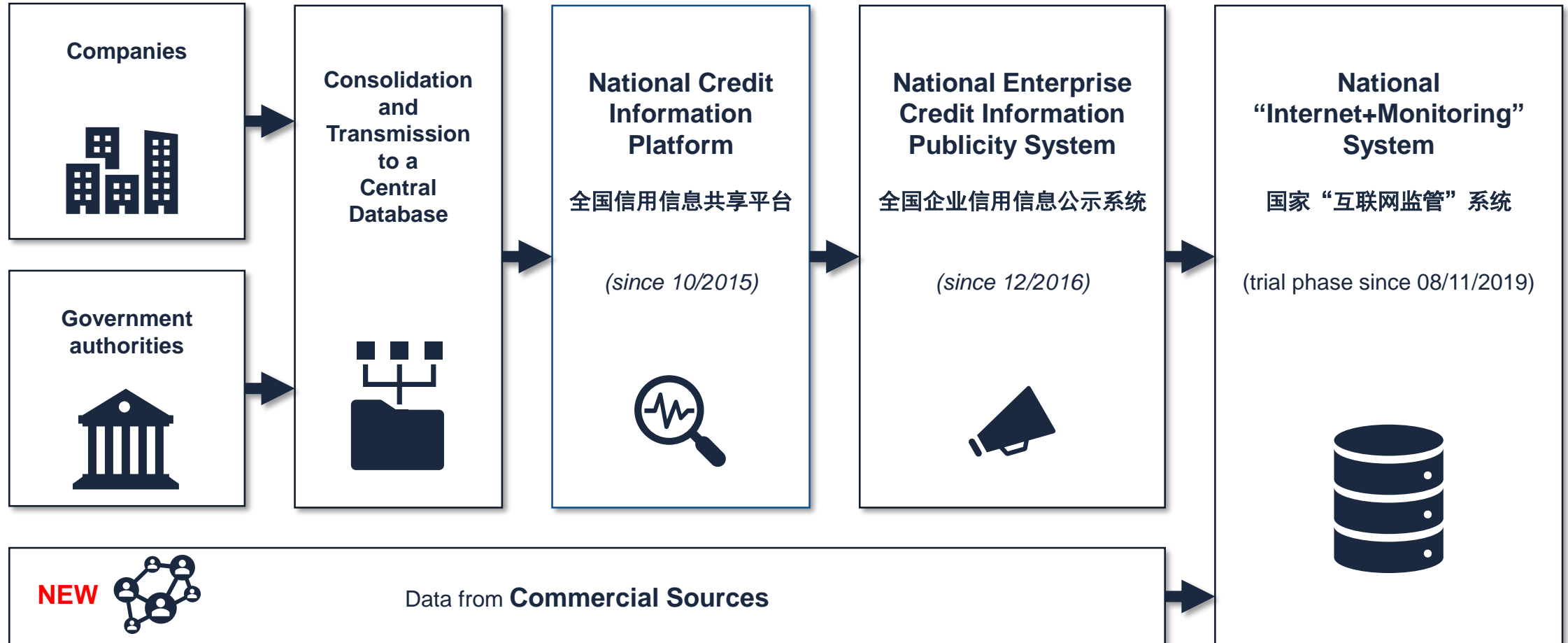
To
Automated influence on market participation for all companies



It Started Already...

*All companies in China
are **already**
being rated under the Corporate Social Credit System,
with several having already felt the impact of negative rating results.*

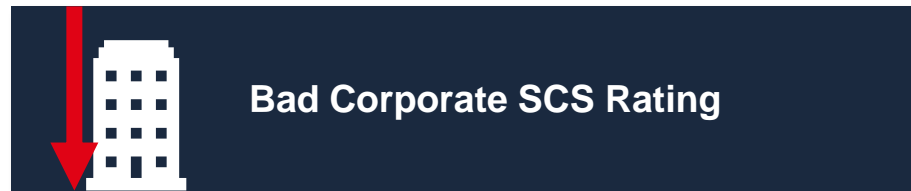
Feeding into, and Bringing it all Together



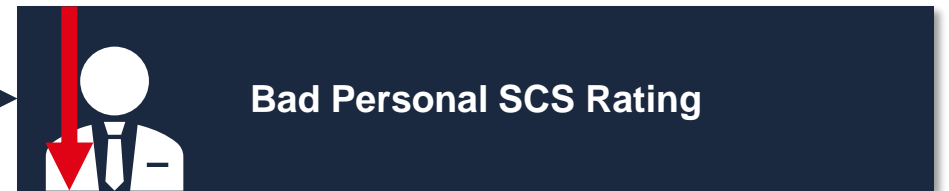
New Measures and Requirements



Supervision and control of business partners



DIRECT
effect on



Example: Customs Authentication Rating (Inspections)

*Average inspection rate (进出口平均检查率) for an AEO certified enterprise: **0.54%***

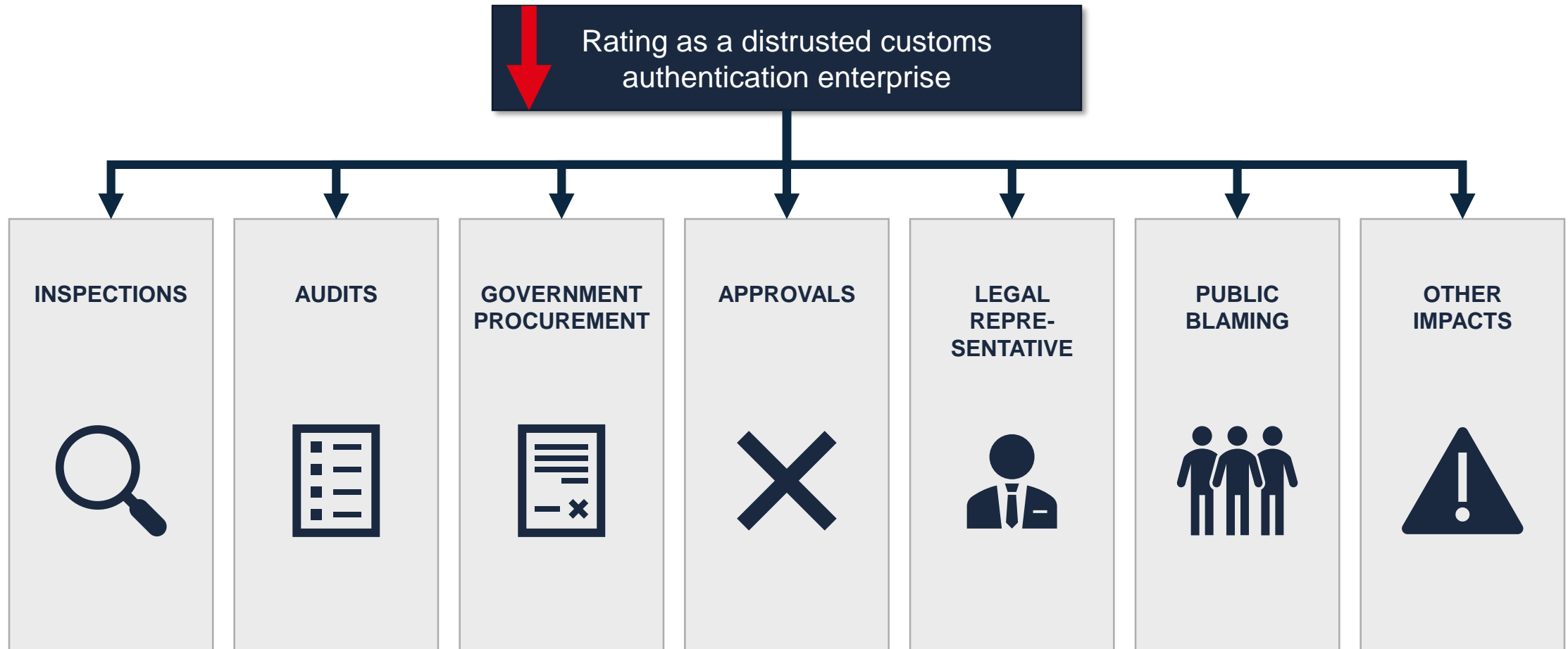


Average inspection rate for a distrusted customs enterprise:

96.29%

Source: CreditChina

Example: Customs Authentication Rating (Repercussions)



The National “Internet+Monitoring” System



The New Official Government Services Website

The screenshot displays the homepage of the National Government Service Platform (www.gjzwfw.gov.cn). The header features the national emblem, the text '全国一体化在线政务服务平台' (National Integrated Online Government Service Platform), and '国家政务服务平台' (National Government Service Platform). A red box highlights the '(试运行)' (Trial Phase) status. Navigation links include '中国政府网' (China Government Website), '无障碍浏览' (Barrier-free browsing), '用户指引' (User Guide), '登录' (Login), and '注册' (Registration). Below the header, there are links for '首页' (Home), '国务院部门服务窗口' (Ministry Service Windows), '地方政府服务窗口' (Local Government Service Windows), '个人办事' (Personal Services), '法人办事' (Corporate Services), and '公共服务' (Public Services). The main banner shows a large traditional Chinese building with a banner that reads '中华人民共和国万岁' (Long live the People's Republic of China). Below the banner are seven service categories: '统一身份认证' (Unified Identity Authentication), '统一证照服务' (Unified License Service), '统一事项服务' (Unified Matter Service), '统一政务服务投诉建议' (Unified Government Service Complaints and Suggestions), '统一好差评' (Unified Good/Bad Reviews), '统一用户服务' (Unified User Service), and '统一搜索服务' (Unified Search Service). A '最新服务' (Latest Services) section lists several new services: '全国12315互联网平台' (National 12315 Internet Platform), '全国公共资源交易平台' (National Public Resource Trading Platform), '同行密切接触人员自查服务' (Self-inspection Service for Close Contacts of Peers), '全国社会艺术水平考级考后成...' (National Social Art Level Examination Post-examination Results...), '全国行政区划信息查询' (National Administrative Division Information Query), '高等教育学历认证' (Higher Education Degree Authentication), '高等教育学历证书查询' (Higher Education Degree Certificate Query), and '国家职业资格证书查询' (National Vocational Qualification Certificate Query). A vertical sidebar on the right contains icons for '用户指引' (User Guide), '我的服务' (My Services), '我要投诉' (I want to complain), '我要纠错' (I want to correct), '移动服务' (Mobile Services), and '移动端' (Mobile End), with a '收起' (Collapse) button at the bottom.

Trial Phase

The National Enterprise Credit Information Publicity System



NCIPS Front Page (gsxt.gov.cn)



国家企业信用信息公示系统

National Enterprise Credit Information Publicity System

Company Directory

▼ 企业信用信息

Abnormal List

经营异常名录

Blacklist

严重违法失信企业名单



请输入企业名称、统一社会信用代码或注册号

查询

热搜榜: 广东皓景新材料科技有... 融金在线资本管理(北... 融金在线资本管理(青...

更多

Companies can be searched by entering the name or the 18-digit Unified Social Credit Number (统一社会信用代码) which every company in China has



信息公告



企业信息填报

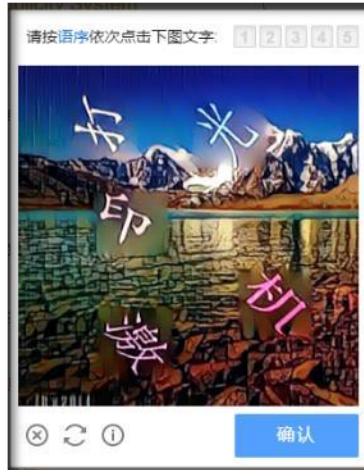


小微企业名录



使用帮助

This page requires patience...



1)
'Difficult Captchas'
for non-native
speakers
(clicking on words to
match up a saying)



2)
Error after searching
(usually occurred to me when
searching for the company
name and not the 18-digit code)



3)
**Error after successful search and clicking on the
company name**
(just try 'open in a new tab' for a few times)

Once you're through... NCIPS Company Directory Page



协力管理咨询(深圳)有限公司 存续 (在营、开业、在册)

统一社会信用代码: 914403007576409583
法定代表人: CHRISTOPHER DEVONSHIRE-ELLIS
登记机关: 深圳市市场监督管理局
成立日期: 2004年04月08日

发送报告
信息分享
信息打印

Basic Information | Penalty Information | Potential Blacklist Entries

基础信息 | 行政许可信息 | 行政处罚信息 | 列入经营异常名录信息 | 列入严重违法失信企业名单 (黑名单) 信息

Licensing Information | Abnormal List Information

■ 营业执照信息

- 统一社会信用代码: 914403007576409583
- 类型: 有限责任公司(台港澳法人独资)
- 注册资本: 225.000000万港元
- 营业期限自: 2004年04月08日
- 登记机关: 深圳市市场监督管理局
- 登记状态: 存续 (在营、开业、在册)
- 住所: 深圳市福田区金田路与福华路交汇处现代商务大厦2503、2504
- 经营范围: 一般经营项目是: 从事企业管理咨询、财务咨询、税务咨询, 商业策划和经济信息咨询, 电子产品信息技术咨询; 代理记账、代理报税; 物业管理和翻译服务; 以承接服务外包方式从事系统应用维护、信息技术支持管理、软件开发、数据处理信息技术和业务流程外包服务; 计算机硬件、软件以及相关辅助设施的销售和上门维护、技术开发、技术转让和技术服务 (依照国家相关法律、法规从事以上业务)。(以上项目不涉及外商投资准入特别管理措施), 许可经营项目是: 出版物销售; 劳务派遣; 人才中介服务, 人力资源服务, 人才供求信息的收集、整理、储存、发布和咨询服务, 人才推荐, 人才招聘 (包括但不限于开展网络招聘), 人力资源开发与管理咨询; 人才测评。

- 企业名称: 协力管理咨询(深圳)有限公司
- 法定代表人: CHRISTOPHER DEVONSHIRE-ELLIS
- 成立日期: 2004年04月08日
- 营业期限至: 2024年04月08日
- 核准日期: 2019年10月18日

When scrolling down...

双随机抽查结果信息 Random Inspection Results

序号	抽查计划编号	抽查计划名称	抽查任务编号	抽查任务名称	抽查类型	抽查机关	抽查完成日期	抽查结果
暂无双随机抽查结果信息								

共 查询到 0 条记录 共 0 页

[首页](#) [◀ 上一页](#) [下一页 ▶](#) [末页](#)

司法协助信息 Litigation Information

序号	被执行人	股权数额	执行法院	执行通知书文号	类型 状态	详情
暂无司法协助信息						

共 查询到 0 条记录 共 0 页

[首页](#) [◀ 上一页](#) [下一页 ▶](#) [末页](#)

涉嫌冒用他人身份登记信息 Suspected Fraudulent Use of Information (other people's identity registration information)

序号	冒名登记事项	当事人姓名	冒名登记时间	登记机关联系方式	公告期自	公告期至	处理结果
暂无涉嫌冒用他人身份登记公示信息							

共 查询到 0 条记录 共 0 页

[首页](#) [◀ 上一页](#) [下一页 ▶](#) [末页](#)

Where Else to Find Information About Your Company: More 'User-Friendly' Alternatives



Official government website on
key information regarding the
SCS



Private enterprise information,
business data and management
personnel query system

信用中国 CREDITCHINA.GOV.CN

信用信息 统一社会信用代码 站内文章

协力管理咨询(深圳)有限公司

首页 | 信用动态 | 政策法规 | 标准规范 | 信息公示 | 信用服务 | 联合奖惩 | 专项治理
 诚信文化 | 行业信用 | 城市信用 | 校园诚信 | 信用研究 | 信用刊物 | 个人信用 | 网站导航

协力管理咨询(深圳)有限公司 存续 守信激励对象 下载报告

统一社会信用代码: 914403007576409583

1、如需开展行政处罚信用修复请点击 [行政处罚信用修复流程指引](#)

重要提示: 2、如对信用信息有异议请点击 [异议申诉系统](#) 提交。

3、因篇幅有限, 单类数据仅展示前100条信息。

基础信息

法定代表人/负责人/ 执行事务合伙人	CHRISTOPHER DEVONSHIRE-ELLIS	企业类型	有限责任公司(台港澳法人独资)
成立日期	2004-04-08	住所	深圳市福田区金田路与福华路交汇处现代商务大厦2503、2504

5 行政许可 | 0 行政处罚 | 2 守信激励 | 0 失信惩戒 | 0 重点关注 | 0 资质/资格 | 0 风险提示 | 0 其他

Licenses and Permits | Administrative Penalties | Trustworthiness Incentives | Trustworthiness Punishments | Focus Points | Qualifications | Potential Risks | Other

Company Name

In Business

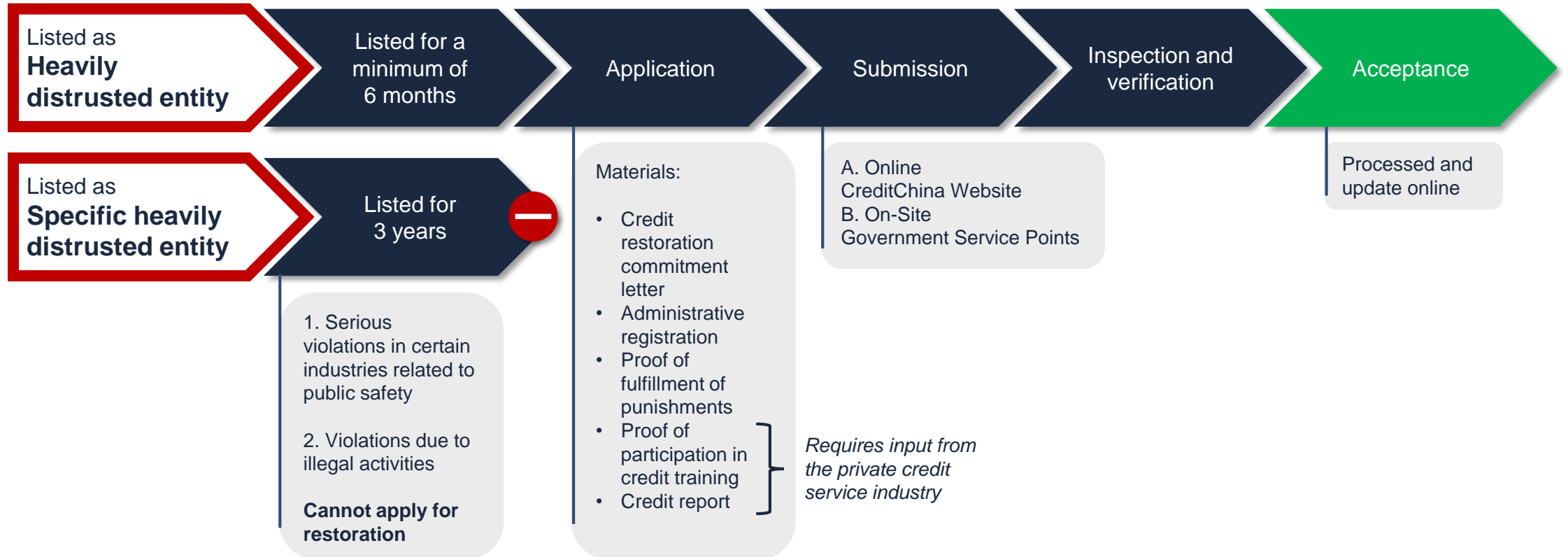
Target for Trustworthiness Incentives

Credit Restoration Process Guidelines

Objection Appeal System

Download PDF Report

Credit Restoration



The Corporate Social Credit System Amidst COVID-19



Failure to pay social contributions in time will not negatively affect the corporate social credit score

Beijing:

- negative credit records of SMEs due to the epidemic situation shall not be included in the municipal public credit information system for the time being.

Shanghai:

- delayed delivery/deferred repayment of loans, etc. for now not be recorded as bad credit
- Credit repair assistance

Jiangsu Province:

- Credit repair mechanism adoption, assistance and instructions

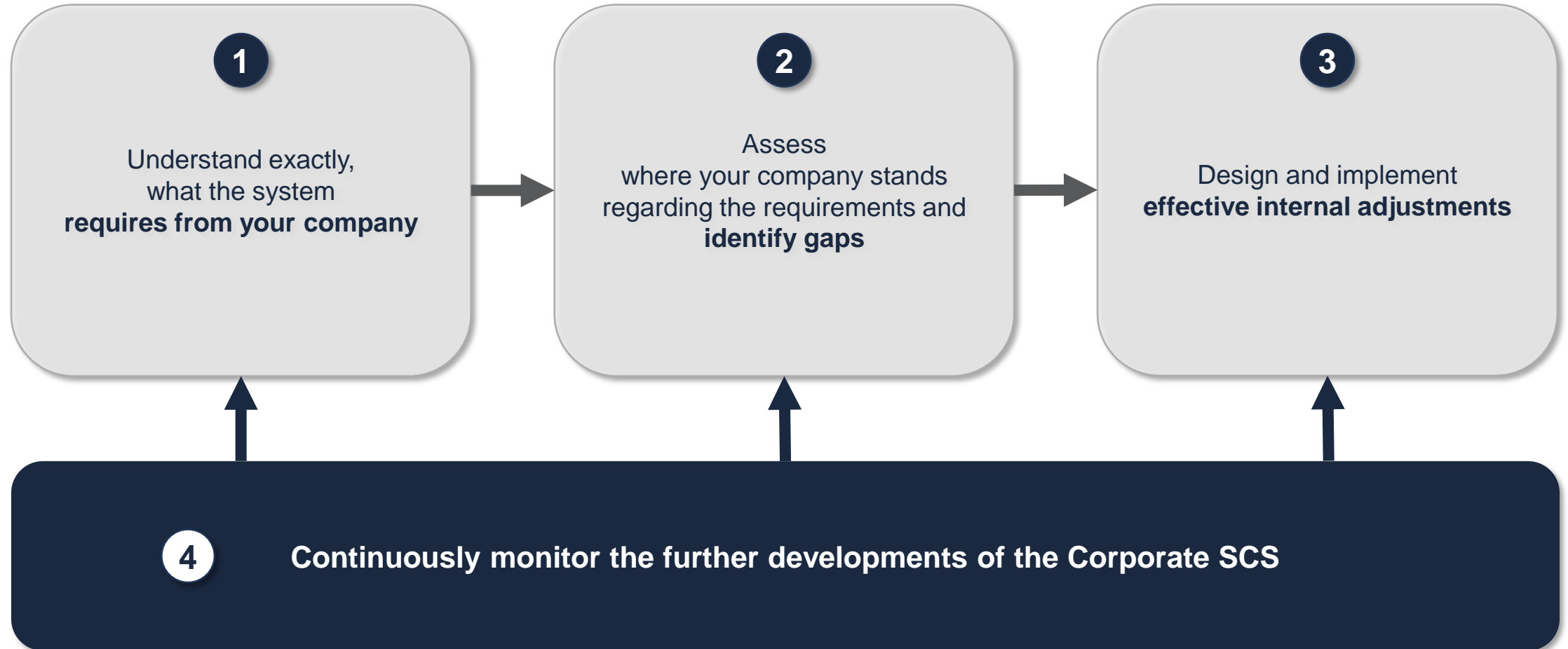
Other local governments have included records of violation of laws during the epidemic into CSCS:

- Driving up prices of medical equipment
- Manufacturing/selling fake/inferior medical equipment
- Massive layoffs during epidemic
- Personal SCS: Refusing to be quarantined, entering public areas/taking public transportation when infected

Be careful with force majeure:

Using force majeure as excuse to help a company's business partners in the supply chain to avoid the default of their contracts might mitigate the impact on the credit score of the said company itself

Time to prepare. It's not too late...





DEZAN SHIRA & ASSOCIATES

Your Partner for Growth in Asia



- Dezan Shira & Associates Offices
- Dezan Shira Asian Alliance Members



Scan this QR Code

Visit our mobile page and get the latest updates,
investor news and resources...
and feel free to contact me directly:

marco.foerster@dezshira.com

